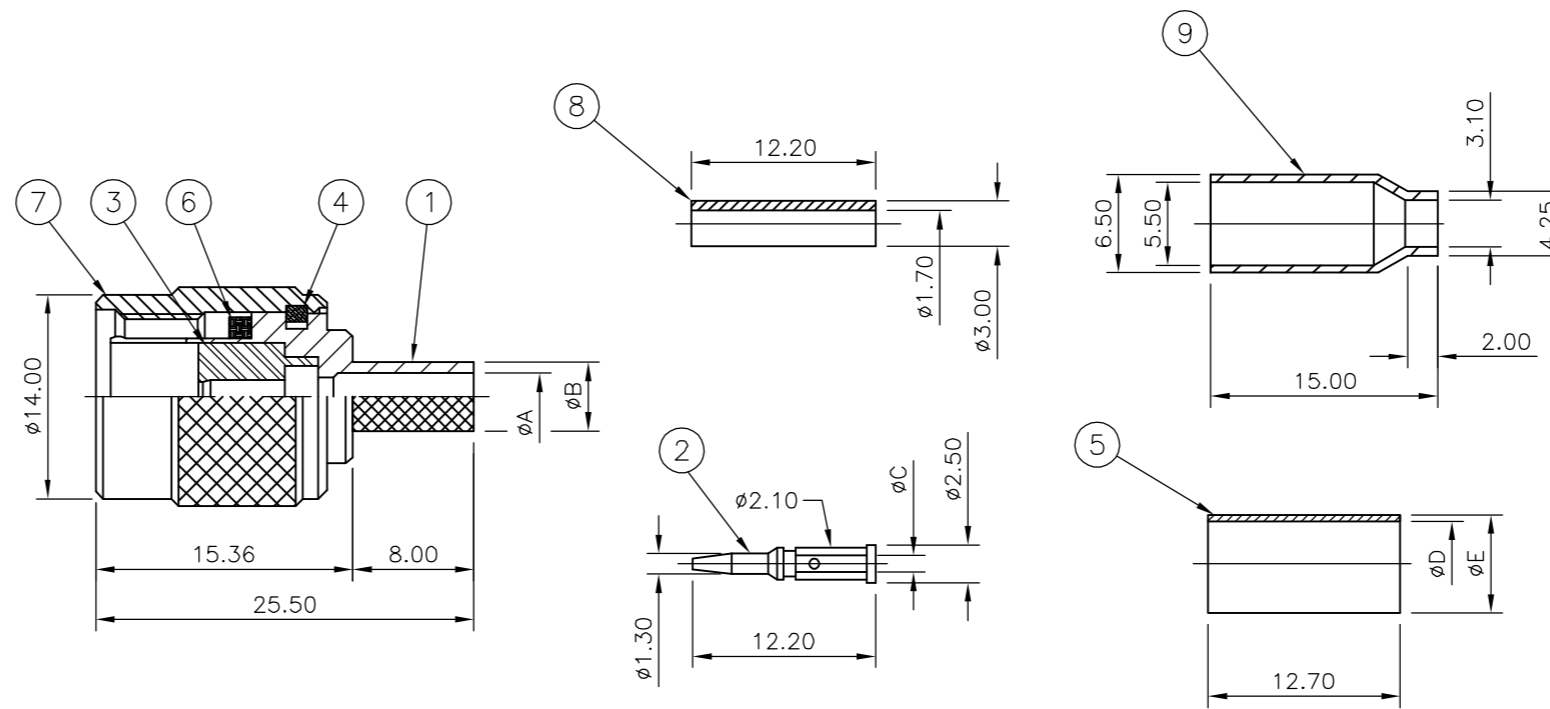


THIS DRAWING IS UNPUBLISHED. RELEASED FOR PUBLICATION SEPT., 2006.
 © COPYRIGHT 2006 BY TYCO ELECTRONICS CORPORATION. ALL RIGHTS RESERVED.

Loc	DIST	REVISIONS					
		P	LTR	DESCRIPTION	DATE	DWN	APVD
E	B	A		FIRST ISSUE	08SEP06	JMS	FWK
7.4	6.5	0.7	5.45	3.8	9-1478242-0	RG59B/U, 62A/U, 140/U, 210/U, URM90, KX 6A, KX 25, KX 52, KX 53	5-1814801-3
7.4	6.5	0.7	5.45	3.8	9-1478242-0	RG59B/U, 62A/U, 140/U, 210/U, URM90, KX 6A, KX 25, KX 52, KX 53	5-1814801-2
6.4	5.4	0.7	4.5	3.1	9-1478242-0	RG179B/U, 187A/U, URM111	5-1814801-1
6.4	5.4	0.7	4.5	3.1	9-1478242-0	RG179B/U, 187A/U, URM111	5-1814801-0
E	D	C	B	A	DIE SET	CABLE GROUPS	PART NO.

- NOTES**
- 1 SINGLE PACK IN ACCORDANCE WITH AMP SPEC 107-3275
 - 2 100 TRAY PACK IN ACCORDANCE WITH AMP SPEC 107-3275
 - 3 Au PLATING
 - 4 Ni PLATING
 - 5 THIS ITEM MUST BE WHITE
 - 6 HAND TOOL: 9-1478240-0
 - 7 DIE SET: SEE TABLE
 - 8 CHARACTERISTICS
 FREQUENCY RANGE: DC-2GHz
 NOMINAL IMPEDANCE: 75 OHMS
 INSULATION RESISTANCE: 5000 MOHMS
 DIELECTRIC WITHSTAND VOLTAGE: 1500V RMS
 WORKING VOLTAGE: 500V MAX AT SEA LEVEL
 CONTACT RESISTANCE:
 CENTRE CONTACT 1.5 mOHMS
 OUTER CONTACT 0.2 mOHMS
 - 9 MECHANICAL CHARACTERISTICS
 DURABILITY: 50 CYCLES
 - 10 FOR TECHNICAL DATA REFER TO YOUR LOCAL TYCO ELECTRONICS SALES OFFICE
 - 11 ALL DIMENSIONS ARE NOMINAL FOR REFERENCE ONLY UNLESS OTHERWISE STATED



QTY	UNIT	MATERIAL	DESCRIPTION	ITEM		
-	-	1	1	BRASS	FERRULE	9
-	-	1	1	NYLON	PUSHER SLEEVE	8
1	1	1	1	ZINC ALLOY	COUPLING NUT	7
1	1	1	1	SILCON RUBBER	GASKET	6
1	1	-	-	BRASS	FERRULE	5
1	1	1	1	BRASS	CIRCLIP	4
1	1	1	1	POLYMETHYLPENTENE	INSULATOR	3
1	1	1	1	BRASS	CONTACT	2
1	1	1	1	ZINC ALLOY	BODY	1
5	35	25	15	MATERIAL	DESCRIPTION	ITEM

THIS DRAWING IS A CONTROLLED DOCUMENT.		DWN J.SANDWELL 08SEP06	Tyco Electronics Corporation Bideford, UK, EX39 4HE															
DIMENSIONS: mm		CHK S.PARLOW 08SEP06	NAME F.WHEELER-KING															
TOLERANCES UNLESS OTHERWISE SPECIFIED		APVD F.WHEELER-KING 08SEP06	PRODUCT SPEC															
<table border="1"> <tr><td>0 PLC</td><td>±</td></tr> <tr><td>1 PLC</td><td>±</td></tr> <tr><td>2 PLC</td><td>±</td></tr> <tr><td>3 PLC</td><td>±</td></tr> <tr><td>4 PLC</td><td>±</td></tr> <tr><td>ANGLES</td><td>±</td></tr> <tr><td>FINISH</td><td>±</td></tr> </table>		0 PLC	±	1 PLC	±	2 PLC	±	3 PLC	±	4 PLC	±	ANGLES	±	FINISH	±	APPLICATION SPEC	TNC STRAIGHT PLUG HEX CRIMP 75 OHM	
0 PLC	±																	
1 PLC	±																	
2 PLC	±																	
3 PLC	±																	
4 PLC	±																	
ANGLES	±																	
FINISH	±																	
MATERIAL SEE TABLE		WEIGHT -	SIZE A2	RESTRICTED TO -														
FINISH SEE TABLE		CUSTOMER DRAWING	CAGE CODE 00779	DRAWING NO C=1814801														
		SCALE NTS	SHEET 1	REV A														

THIS DRAWING IS UNPUBLISHED. RELEASED FOR PUBLICATION SEPT , 2006.
 © COPYRIGHT 2006 BY TYCO ELECTRONICS CORPORATION. ALL RIGHTS RESERVED.

LOC		DIST		REVISIONS			
P	LTR	DESCRIPTION	DATE	DWN	APVD		
-	-	SEE SHEET 1	-	-	-		

COMPONENTS

MAIN BODY (ITEM 1,3,4,6,7 & 8)	CENTRE CONTACT (ITEM 2)	PUSHER SLEEVE (ITEM 9)	CRIMP FERRULES (ITEM 5 & 10)

ASSEMBLY INSTRUCTION

CABLES: RG58C/U, 141A/U, 303/U, URM43, 76, BELDEN 9907, KX15	CABLES: RG174A/U, 188A/U, 316/U, URM95, KX3B, KX22A
<p>STEP 1</p> <p>1. SLIDE METAL CRIMP FERRULE OVER CABLE</p>	<p>STEP 1</p> <p>1. SLIDE METAL CRIMP FERRULE OVER CABLE</p>
<p>STEP 2</p> <p>1. STRIP CABLE TO DIMENSIONS AS SHOWN</p>	<p>STEP 2</p> <p>1. STRIP CABLE TO DIMENSIONS AS SHOWN</p>
<p>STEP 3</p> <p>1. FIT CONTACT OVER CENTRE CONDUCTOR TO BUTT AGAINST DIELECTRIC. 2. CRIMP USING TOOL AS NOTES ON PAGE 1.</p> <p>RECOMMENDED CENTRE CONTACT A/F HEX</p>	<p>STEP 3</p> <p>1. SLIDE ITEM 10 PUSHER SLEEVE OVER DIELECTRIC BEFORE FITTING THE CONTACT. 2. FIT CONTACT OVER CENTRE CONDUCTOR TO BUTT AGAINST DIELECTRIC. 3. CRIMP USING TOOL AS NOTES ON PAGE 1.</p> <p>RECOMMENDED CENTRE CONTACT A/F HEX</p>
<p>STEP 4</p> <p>1. PRESS SUB-ASSEMBLY INTO BODY, UNTIL CONTACT IS FULLY LOCATED BY AN AUDIBLE CLICK. 2. ENSURE THAT KNURLED HOUSING INSERTS BETWEEN THE DIELECTRIC AND CABLE BRAID.</p>	<p>STEP 4</p> <p>1. PRESS SUB-ASSEMBLY INTO BODY, UNTIL CONTACT IS FULLY LOCATED BY AN AUDIBLE CLICK. 2. ENSURE THAT KNURLED HOUSING INSERTS BETWEEN THE PUSHER SLEEVE AND CABLE BRAID.</p>
<p>STEP 5</p> <p>1. SLIDE CRIMP FERRULE ALONG THE CABLE UNTIL IT BUTTS AGAINST THE HOUSING BODY. 2. CRIMP USING TOOL AS NOTED ON PAGE 1. 3. CRIMP DIMENSION AS SHOWN.</p> <p>RECOMMENDED CRIMP SLEEVE A/F HEX</p>	<p>STEP 5</p> <p>1. SLIDE CRIMP FERRULE ALONG THE CABLE UNTIL IT BUTTS AGAINST THE BODY HOUSING. 2. CRIMP USING TOOL AS NOTED ON PAGE 1. 3. CRIMP DIMENSION AS SHOWN.</p> <p>RECOMMENDED CRIMP SLEEVE A/F HEX</p>

THIS DRAWING IS A CONTROLLED DOCUMENT.		DWN J.SANDWELL 08SEP06	<p>Tyco Electronics Corporation Bideford, UK, EX39 4HE</p>												
DIMENSIONS: mm		CHK S.PARLOW 08SEP06													
		APVD F.WHEELER-KING 08SEP06	NAME TNC STRAIGHT PLUG HEX CRIMP 50 OHM												
TOLERANCES UNLESS OTHERWISE SPECIFIED		PRODUCT SPEC 108-3435	SIZE A2												
<table border="1"> <tr><td>0 PLC</td><td>±</td></tr> <tr><td>1 PLC</td><td>±</td></tr> <tr><td>2 PLC</td><td>±</td></tr> <tr><td>3 PLC</td><td>±</td></tr> <tr><td>4 PLC</td><td>±</td></tr> <tr><td>ANGLES</td><td>±</td></tr> </table>		0 PLC	±	1 PLC	±	2 PLC	±	3 PLC	±	4 PLC	±	ANGLES	±	APPLICATION SPEC SEE SHEET 2	CAGE CODE 00779
0 PLC	±														
1 PLC	±														
2 PLC	±														
3 PLC	±														
4 PLC	±														
ANGLES	±														
MATERIAL SEE TABLE	FINISH SEE TABLE	WEIGHT -	DRAWING NO C=1814801												
		CUSTOMER DRAWING	RESTRICTED TO -												
		SCALE NTS	SHEET 2 OF 2 REV A												

1814801

A